

Snohomish County Water Purveyors

North Snohomish County Coordinated Water System Plan

Plan Adopted By Washington State Department of Health: January 5, 2011
(Map Revision Dates: 4/4/2016)

LEGEND

- Critical Water Supply Service Area Boundary**
- Expanding Water System Boundary
- Carpenter-Fisher Subbasin Boundary
- Service Overlaps Between Water Purveyors
- Service Gaps Between Water Purveyors

EXPANDING MUNICIPAL WATER SYSTEMS (WITH MORE THAN 50 RESIDENTIAL CONNECTIONS)

- Municipal Water System, Incorporated Portion
- Municipal Water System, Unincorporated Portion

EXPANDING SPECIAL PURPOSE WATER SYSTEMS (WITH MORE THAN 50 RESIDENTIAL CONNECTIONS)

- Alderwood Water and Wastewater District
- Cross Valley Water District
- Highland Water District
- Mukilteo Water and Wastewater District
- Olympic View Water and Sewer District
- Silver Lake Water and Sewer District
- Snohomish County Public Utility District No. 1 (P.U.D.)

EXPANDING PRIVATE WATER SYSTEMS (WITH MORE THAN 50 RESIDENTIAL CONNECTIONS)

- Roosevelt Water Association
- Seven Lakes Water Association
- Three Lakes Water Association
- Warm Beach Water Association
- Wilderness Ridge Community Club Water System

EXPANDING TRIBAL WATER SYSTEMS (WITH MORE THAN 50 RESIDENTIAL CONNECTIONS)

- Tulalip Water System

NONEXPANDING WATER SYSTEMS

- 50 Or More Connections
- 15-49 Connections
- 1- 14 Connections
- Stillaguamish Tribe of Indians
- Nonexpanding System Absorbed by Highland

GENERAL MAP SYMBOLS

- Incorporated City Boundary
- Urban Growth Area Boundary
- Public Land Survey Section Boundary
- Public Land Survey Township Boundary
- Mount Baker - Snoqualmie National Forest

This map is intended to provide general information only. No regular data sharing program exists between water purveyors and the county. Purveyors are responsible for the most current and accurate information for their district boundaries and water line locations.

New water hookups are dependent upon proximity to existing water lines. It should not be assumed that new hookups are possible at locations where a water service and/or planning area water lines do not already exist.

Water systems labeled as "nonexpanding" do not offer water extensions outside of their water service boundary. The number of water hookups within a nonexpanding water system are determined by the Washington State Department of Health.

*Group A water systems come under the jurisdiction of the Washington State Department of Health. Rules, regulations, and definitions for Group A water districts may be found in the Washington Administrative Code (WAC), Chapter 246-220. All Group A water systems (both expanding and nonexpanding) are shown on this map. Group B water systems have not been mapped.

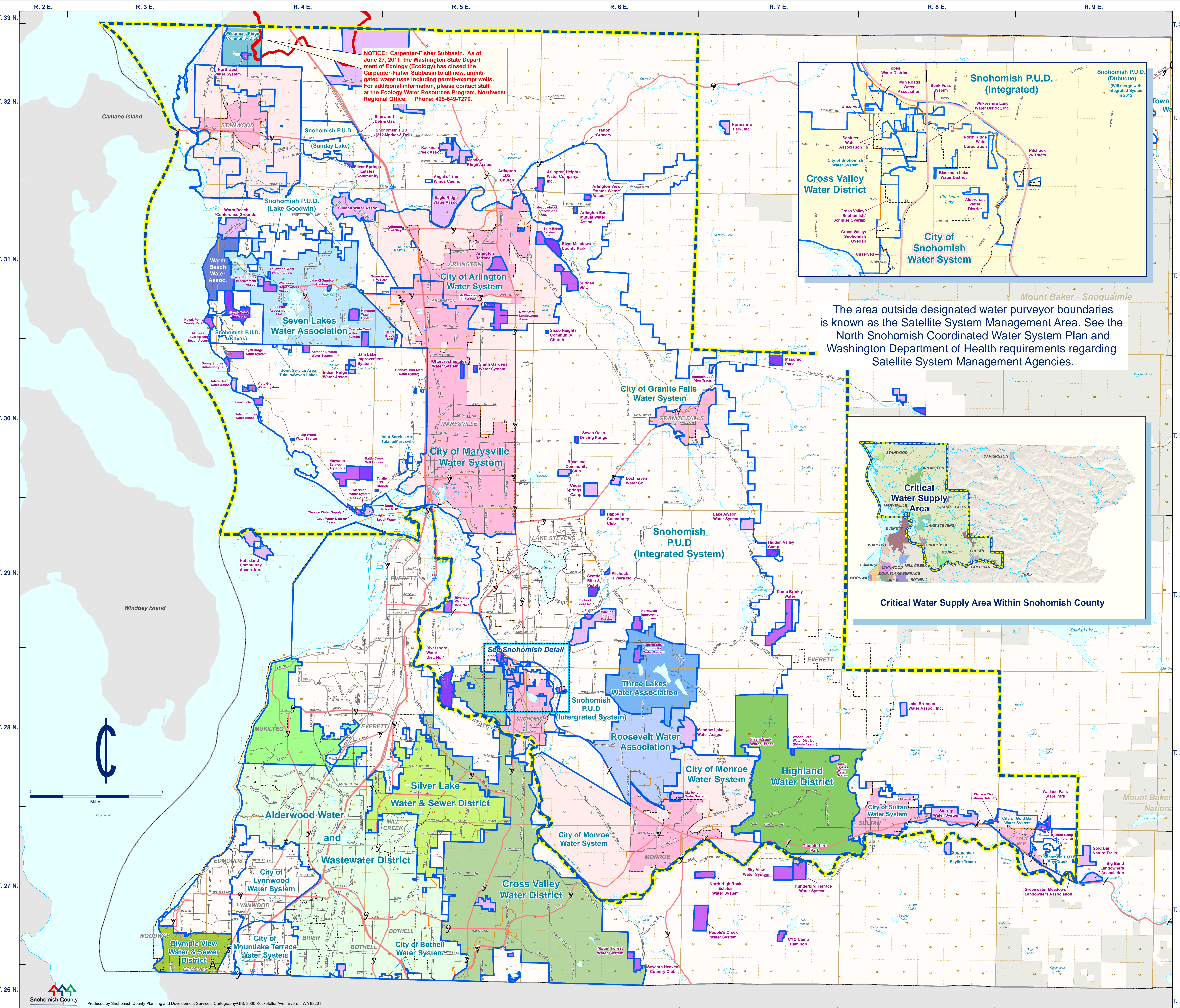
**The Critical Water Supply Service Area is that portion of the county where water supply problems related to uncoordinated planning, inadequate water supply, or unreliable water more area. No new public water system may be approved within the area unless an existing water purveyor is unable to provide water service. Refer to State RCW 70.116 for more information.

Boundary data for special purpose water districts (those which avoid commissioners (no public elections) is maintained by the Snohomish County Auditor's Office. All other district boundary data was relayed collected by the consulting firm of Economic and Engineering Services in the early 1980's. Over the years, PWS has relied upon acquisition notices, comprehensive water plans, and website postings by the individual districts to keep our boundary data sets current. No regular data sharing program exists between the districts and the County.

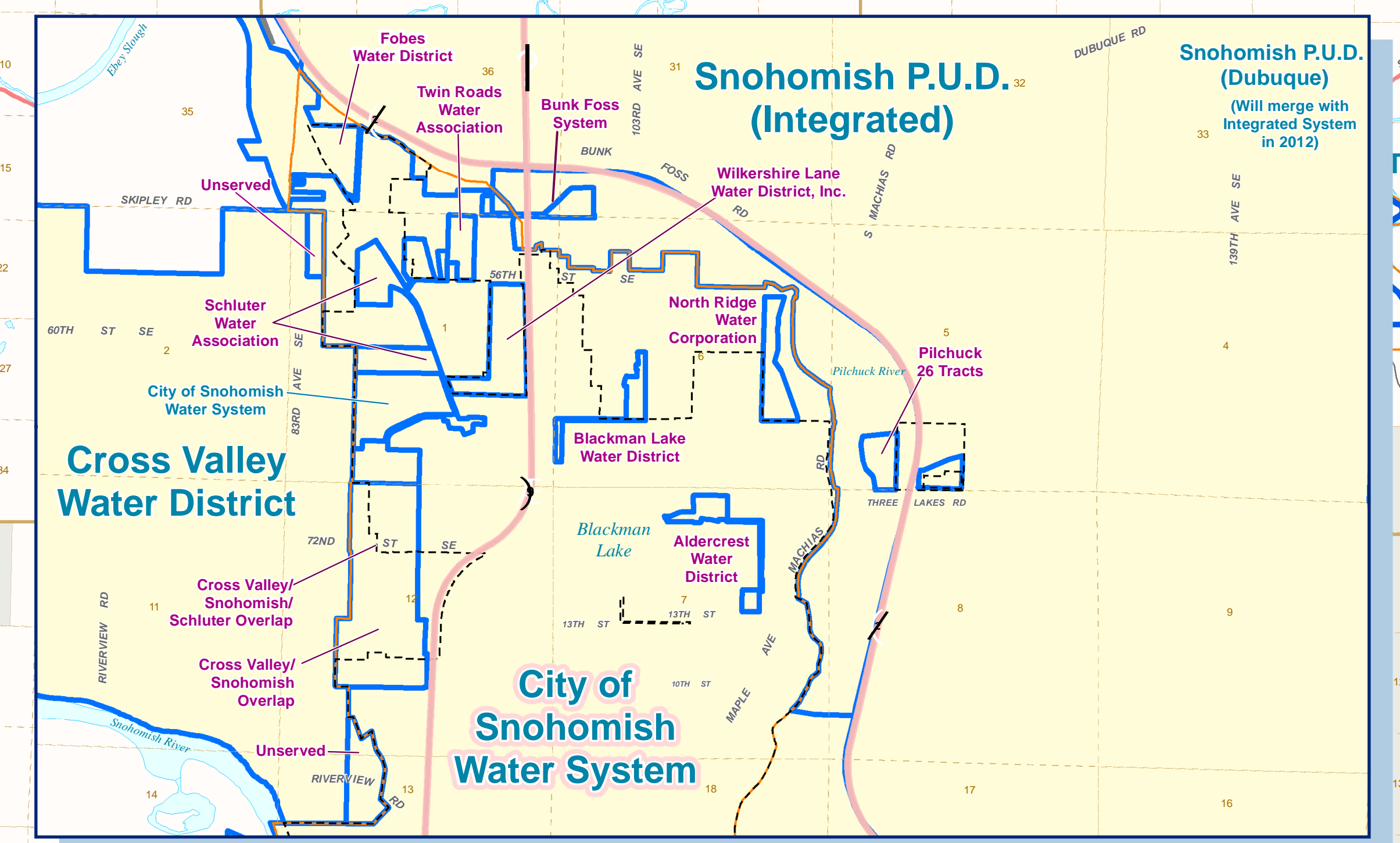
DATE: Expanding Water System Boundary, updated 1-2014
Expanding Municipal Water System Boundary, updated 1-2014
Snohomish County PUD No. 1, updated 1-2014
Urban Growth Area Boundaries, POS 11-2013
City Boundaries, Assessor 1-2014
All other data derived from the Snohomish County Group A Water Purveyors, January 2012 map

Disclaimer: All maps, data and information set forth herein ("Data") are for illustrative purposes only and are not to be considered an official citation to, or representation of, the Snohomish County Code. Any statements and updates to the Data, together with other applicable County Code provisions, may apply which are not depicted herein. Snohomish County makes no representation or warranty concerning the content, accuracy, currency, completeness or quality of the Data contained herein and expressly disclaims any warranty of merchantability or fitness for any particular purpose. All persons accessing or otherwise using the Data assume all responsibility for use thereof and agree to hold Snohomish County harmless from and against all damages, loss, claim or liability arising out of any error, defect or omission contained within said data. Washington State Law, Ch. 42.26 RCW, prohibits state and local agencies from providing access to lists of individuals intended for use of commercial purposes and, thus, no commercial use may be made of any data comprising lists of individuals contained herein.

Document Path: W:\p\cartools\water\cswp\projects\2016\ARC MAPS\CWSWP_North_Snohomish_County_2016\update\Map_Saved_4/4/2016 9:37:18 AM



NOTICE: Carpenter-Fisher Subbasin. As of June 27, 2011, the Washington State Department of Ecology (Ecology) has closed the Carpenter-Fisher Subbasin to all new, unpermitted water uses including permit-exempt wells. For additional information, please contact staff at the Ecology Water Resources Program, Northwest Regional Office. Phone: 425-649-7270.



The area outside designated water purveyor boundaries is known as the Satellite System Management Area. See the North Snohomish Coordinated Water System Plan and Washington Department of Health requirements regarding Satellite System Management Agencies.

